



SmartFlush In-Wall Automatic Toilet Flusher

ATF-0001

Installation Manual



Quality Guarantee

*Thank you for choosing the automatic urinal flusher. Please read the instruction carefully before installation. This manual is for your reference only.



Features

- Hands free sensor operation.
- Adjustable control stop for water flow adjustment
- Manual push button for flushing.
- Adjustable sensing distance

Specifications

Power	6V (4 x Alkaline AA)	AC 110-240V 50 – 60 Hz
Water Pressure	0.3 – 0.8 MPa	
Water Temperature	0.1 – 50 °C	
Water Flow Volume	9 – 12 L (Single flush @ 0.24 MPa)	



Construction / Installation Diagram

Plumbing installation must be in accordance with applicable codes and regulations. Water supply lines must be sized to provide an adequate volume of water for each fixture. Flush all waterlines prior to operation.

Prior to installing your Flush Valve, install the items listed below:

- Toilet fixture
- Drain line
- Water supply line

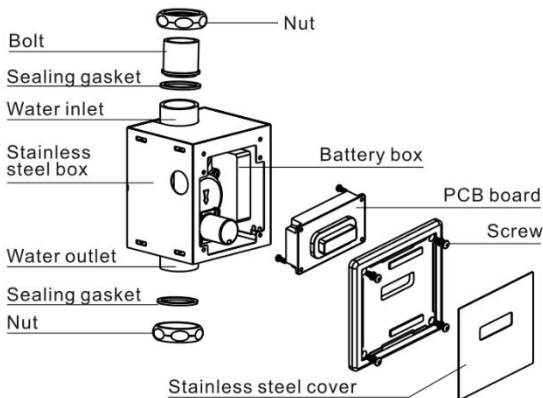
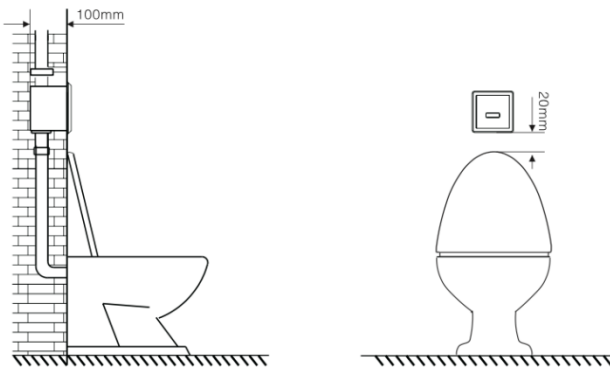
The supply piping to these devices must be securely anchored to the building structure to prevent the installed device moving during use. Prevent marring to the exposed surface during installation. **IMPORTANT:** Purge all air from the supply lines before connecting flush valve to the bowl.

To prevent valve malfunction, do not install a handrail or any other object within the detection range of the sensor. Do not install the flush valve



where sensor faces a mirror, stainless steel wall, other highly reflective surfaces or another infrared sensor.

Determine the installation location of the studs and water supply pipe relative to the position of the toilet.





Detection / Activation

No manual adjustments are required for most settings. Default beam's effective range is 65 – 70 cm. The factory setting should be satisfactory for most installations.

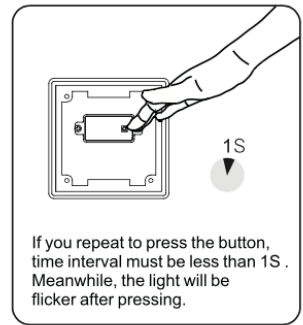
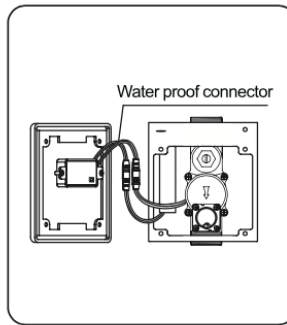
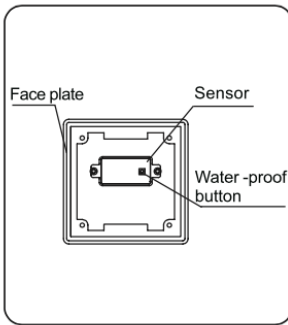
Water Flow Time Adjustment

Default water flow delivery is 8 seconds.

1. Press the black push button 5 times (x5) until the red LED stays on. The valve will open, flushing once to indicate ready for timing adjustment.
2. Within 10 seconds, press the black push button once for 6 seconds delivery, push twice for 8 seconds, 3 times for 10 seconds delivery, 4 times for 12 seconds delivery.



Range Adjustment

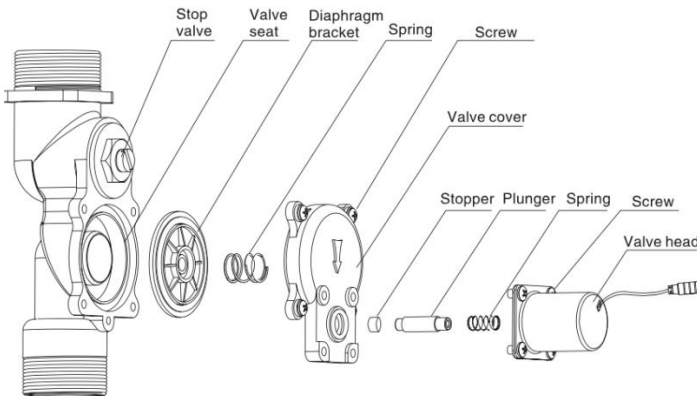


If the range is too short or too long, it can be adjusted.

1. Using a phillips screw driver remove the stainless steel cover plate by unscrewing the screw from the bottom of the plate.
2. Ensure both cables are connected.
3. Press the black push button three time (x3) until the sensor red LED flashes.
4. Place a target sensor view at a desired distance for 30 seconds. The LED will stay on for 5 seconds before flashing twice indicating distance set.



Solenoid Valve Maintenance



1. Shutoff all water lines.
2. Remove the stainless steel front cover.
3. Disconnect the sensor & power cables.
4. Using a phillips screw driver remove the black plastic front cover.
5. Remove the four solenoid valve screws (black body).
6. Gently pull out the following solenoid cover through diaphragm bracket.
7. Clean the valve seat using a dampened soft cloth with diluted dishwashing detergent and dry it with another soft cloth.
8. When completed, assemble back the solenoid valve.



Flow Rate Adjustment

Locate the control stop (stop valve) & with a flat head screw driver adjust (counter clockwise) the stop valve to desired flow rate.

Battery Replacement

Replace battery when RED LED indicator flashes rapidly or when flusher stops functioning.

- i. Turnoff the stop valve.
- ii. Disconnect the battery box from the sensor.
- iii. Remove the battery holder
- iv. Using a Philips screw driver remove the battery cover and the batteries.
- v. Replace 4 AA batteries
- vi. Place back the battery cover and fasten the four Phillip screws to secure the cover.
- vii. Connect the battery holder to the sensor and place the battery holder inside the junction box.
- viii. Place the black plastic junction cover & fasten cover onto the junction box.



Troubleshooting

1. Valve does not flush.
 - i. The main valve in water supply line or the control stop is shut off. Open the main valve or the stop valve.
 - ii. The connectors are not connected. Connect the wires.
 - iii. The surface of the sensor is dirty. Clean surface with soft cloth.
 - iv. There is a reflective surface in front of the sensor. Remove the reflective surface from the front of the sensor.
 - v. The sensor or the solenoid is not functioning. Contact distributor for possible part replacement.
 - vi. Small holes in the diaphragm is clogged. Clean the small hole in the diaphragm using a small needle.
2. Valve will not shutoff
 - i. Plunger damage. Contact distributor for possible part replacement.
3. Water delivery is too small / too large
 - i. Stop valve flow rate not adjusted properly. Adjust the water discharge rate by the turning the stop valve clockwise or counterclockwise.
4. Red LED flashing when user steps in sensor range. Batteries are low.
 - i. Replace batteries.



Care & Cleaning

IMPORTANT! Do not scratch the sensor or faceplate when cleaning. Avoid using any cleaning materials that may scratch the surface.

Never use polishing powder, detergent that includes coarse particles, thinners, benzene, acids, alkaline detergents, or nylon scrub brushes.

To safely clean the surface, wipe it using a dampened soft cloth with diluted dishwashing detergent and dry it with another soft cloth. If this does not adequately clean the surface, wipe the area with a neutral detergent and wet cloth.



Resources



For Installation guides, visit our resource page through the QR code

Alternatively, you can visit our resource page at <https://faucetscanada.ca/resources/>



To view more products from Faucets Canada, visit our shop page through the QR code.

Alternatively, you can visit our shop page at <https://faucetscanada.ca/shop/>

Warranty Information



For information on product warranty, visit our resource page through the QR code.

Alternatively, you can visit our warranty claims page at <https://faucetscanada.ca/warranty-claim/>



About us

Here at FCi, our main goal is to break the eco-innovation boundary and provide customers with fixtures that save water and deliver reliable sources of sanitation every time.

As Canada's favourite automatic faucet brand, we are proud to say we deliver quality touchless fixtures that perform beyond expectations and exceed design standards.

To learn more about Faucets Canada, please visit our website at FaucetsCanada.ca