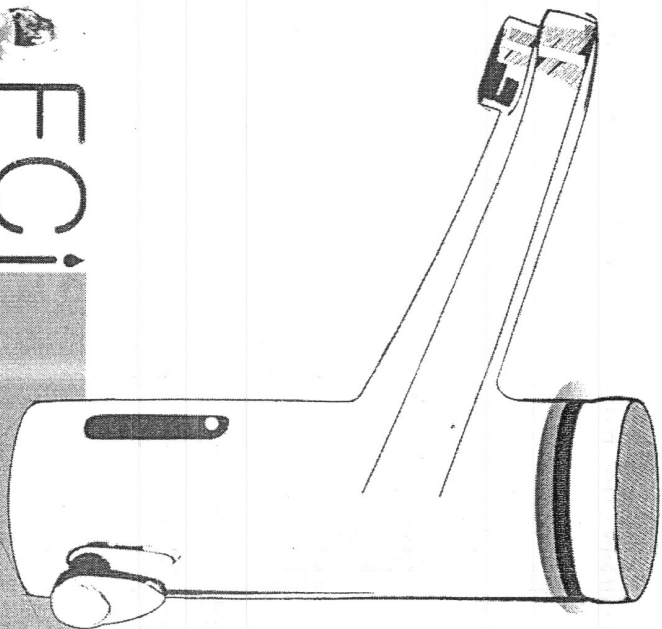



INTELLIGENT LAVATORY FAUCET

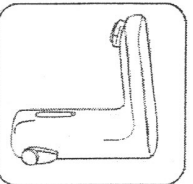
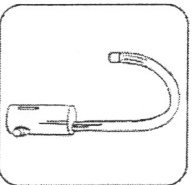
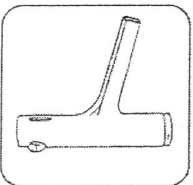
Tel: 905.707.2305
Fax: 905.707.2304
Toll Free: 1.866.255.1877

174 West Beaver Creek Road.
Richmond Hill, ON
L4B 1B4, Canada

www.fcifaucets.com
Email: sales@fcifaucets.com

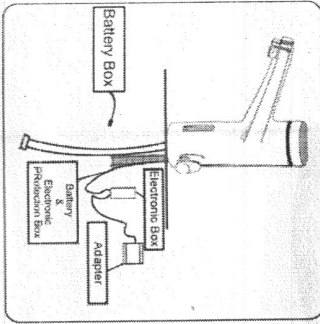



INTELLIGENT LAVATORY FAUCET
FCi
INTELLIGENT FAUCETS





How to connect the battery box ,or the electrical box:



Installation :

- 1- Connect the socket from underneath the faucet to the long socket of electrical box.
- 2- Connect the adaptor's socket to the electrical box short socket.
- 3- Push the electronic button on the faucet " once".

• What to do in terms of electricity disconnection?

- 1- Disconnect the socket from electrical box and connect it to the battery box . push the electronic button right after.
- 2- When the electricity is fixed , reconnect the socket to the long socket of electrical box.
- 3- Push the electronic button again.

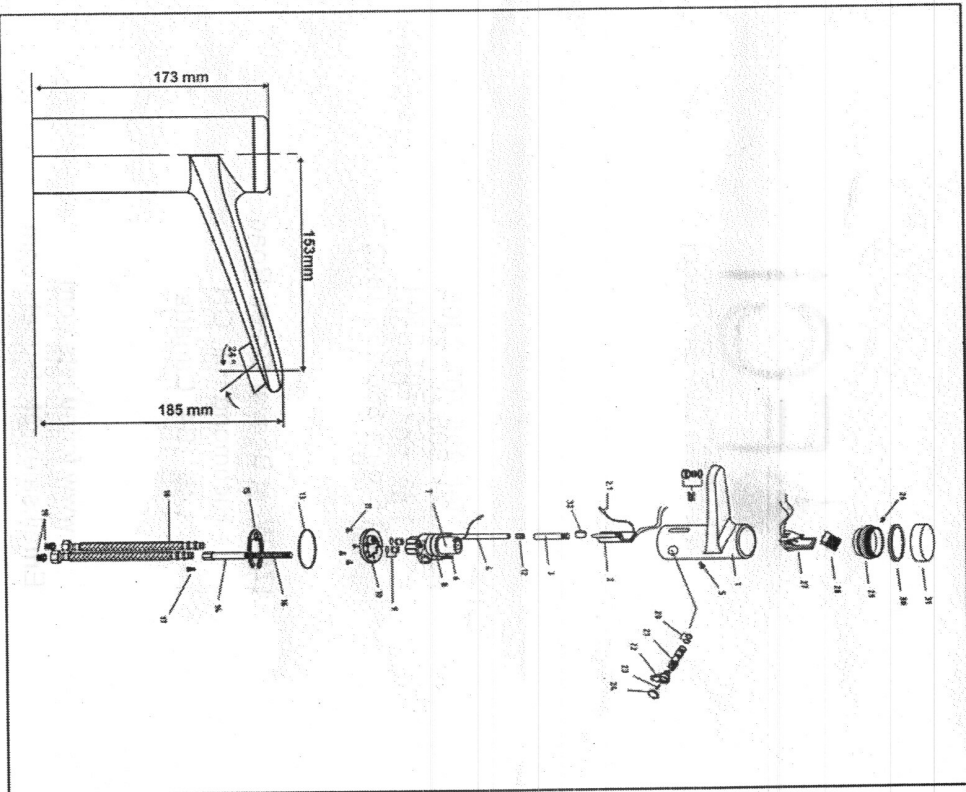
• Warning:

- 1) do not separate the sticker from the sensor.
- 2) do not push the sensor with the sharp tools.

• what to do in terms of complication:

If the faucet doesn't work after the electricity disconnection , or the sensor blinks constantly, you can solve the difficulty by two methods:

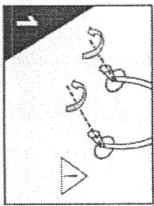
- 1- disconnect the adaptor from the plug for 10 seconds, and reconnect it afterwards.
- push the electronic button once.
- 2- disconnect the socket, linking the faucet to the electrical box, and reconnect it again . push the electronic button once.



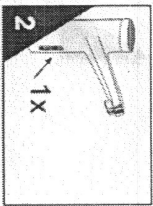


How to install:

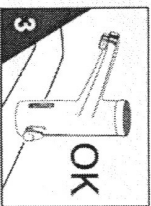
1-Open the piswar valves equally.



2-Push the setting button once.



3-The faucet is now ready to use.

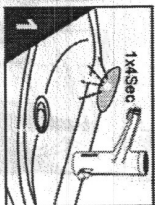


Battery life indicator:

1- When the battery is about to die, LED blinks every 4 seconds.

2- The blinking action gradually reduces to 2.5 times per second.

3- After the second step, the intelligent faucet will be turned off automatically, and the water flow stops, then the LED continues blinking.



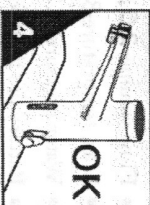
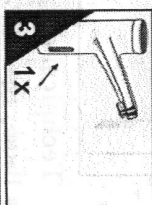
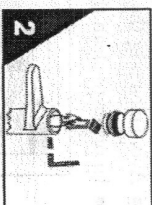
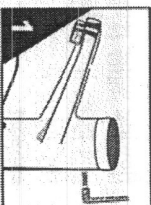
How to change the battery:

1-Separate the electronic part from the faucet.

2-Remove the old battery, waiting at least one minute then replace the new battery.

3-Push the setting button once.

4-The faucet is now ready to use.





FECCI

INTELLIGENT LAVATORY FAUCET

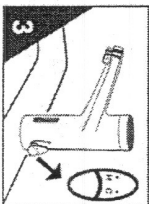


FECCI

INTELLIGENT LAVATORY FAUCET

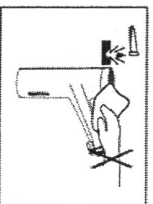
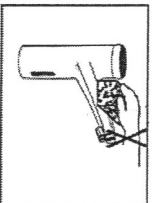
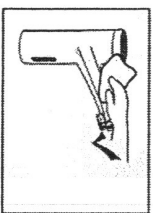
How to adjust the water temperature:

By using the hot or cold lever, the flowing water temperature can be set.



Warning:

- Please note that faucet will be installed in the non-freezing area.
- In any steps that flowing water stops, or confronted with continuous flowing water remove the battery and replace it after one minute and press the button once, if your problem was not solved, close the input pliswar valves, and kindly contact the post-purchase support.
- Avoid cleaning the faucet with the chemical detergents.
- In order to clean the faucet, please use the moistened tissue.

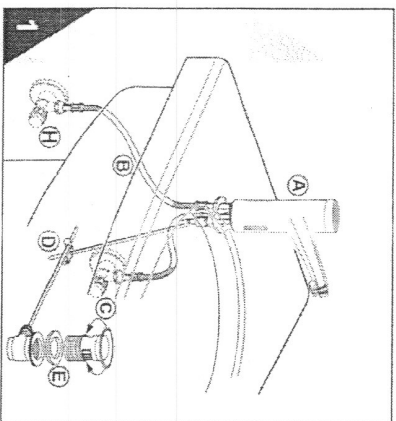


Technical data:

- Battery type: CRP2 - DL 223 - 6VDC
- Flow volume: 2-6 liters per minute
- Max. temperature: 80°C
- Water pressure: 0.3-10 bar
- Battery life time: for average use of 50 times per day is 3 years.

Visual Installation Guide:

-The faucet and its mechanical parts should be installed into the sink or wall, as it is shown in the picture below.

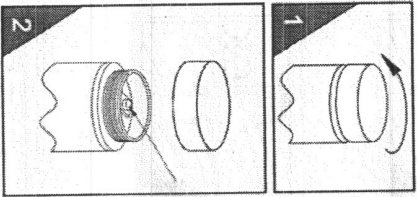


-The below alphabet list should be matched with the above picture:

- Ⓐ Drain handle on faucet
- Ⓑ Flexible hose
- Ⓒ Cold water
- Ⓓ Handle from drain to faucet
- Ⓔ Exploded drain
- Ⓕ Hot water



How to set the LED :



- 1- Open the cap in the direction of the arrow.
- 2- Set the light with the black button as given below:
 - a) When you push the black button Once the light will be always off.
 - b) By next push: The light will be always on.
 - c) By next push: The light will be on while the water is flowing and it will be off after 10 seconds.
 - d) By next push: It returns to standard position
- In the standard position, the light will be on when the water flows and it will be off when the water stops flowing.

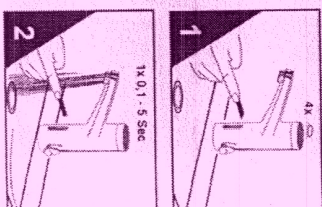
•How to return to the standard mode :
After disconnecting the faucet, it will be on its standard mode again.

How to set the water flow duration:

1- Push the setting button until LED blinks four times then release the button.

2- Push the button again, holding 1 to 5 seconds.

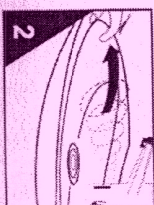
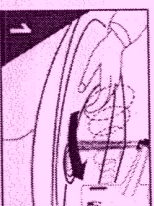
(Depends on how long you hold the setting button, the water flow duration will be set between 0.5 to 4 seconds.)



3- The LED blinks twice.

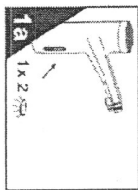
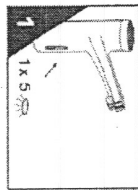
4- The faucet is ready to use.

Operation:

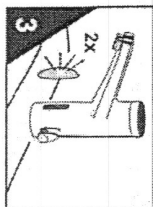


How to adjust the sensor range:

1- Set the faucet on the continuous off mode. (refer to the section that explain how to turn off the faucet). (Next page)
push the setting button, then release the button after LED blinks twice.



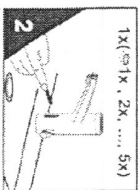
3- Upon releasing button, the LED blinks twice.



4- Now the sensor range is adjusted successfully.

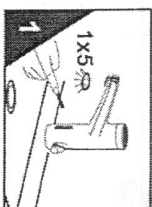


2- Push the setting button again until the LED starts blinking.

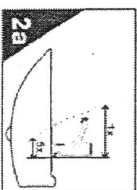


How to turn off the faucet:

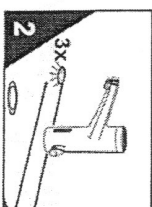
1- Push the setting button, holding until the LED blinks 5 times, then release it.



2a- As the LED blinks once, the maximum range will be set, and as it blinks 5 times, the minimum range will be adjusted.



2- After releasing the setting button, the LED immediately blinks 3 times.



3- The faucet is now turned off, if you wish to turn on the faucet again, push the button once.

